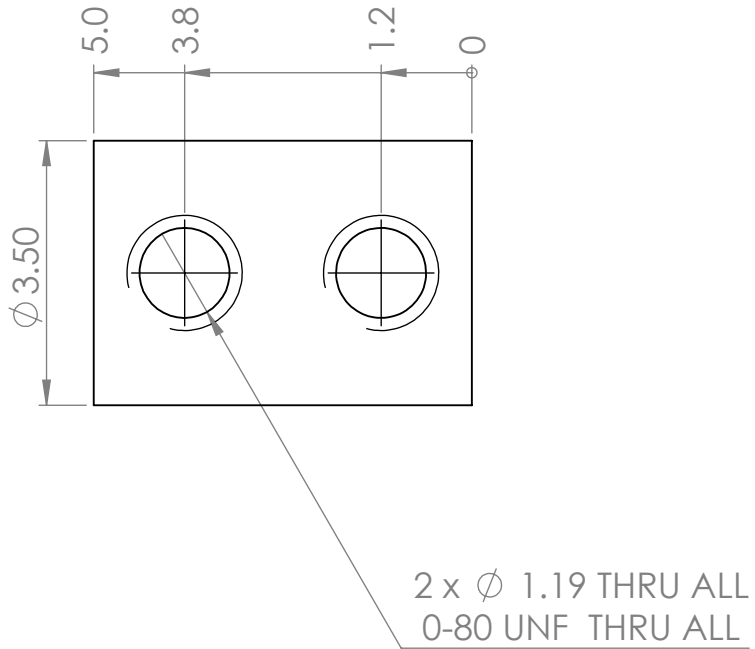
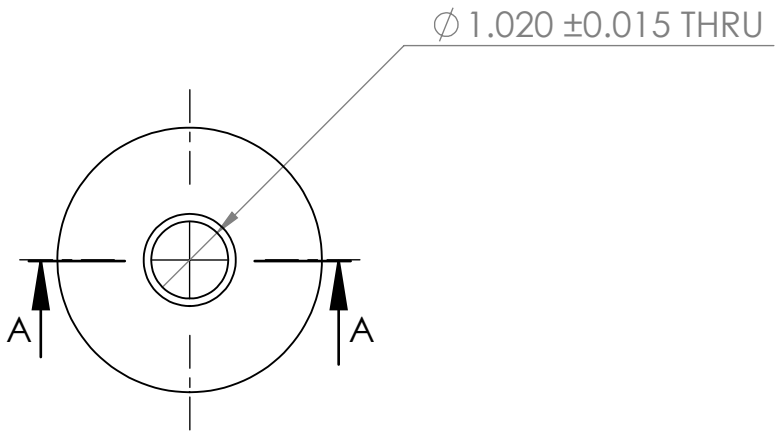
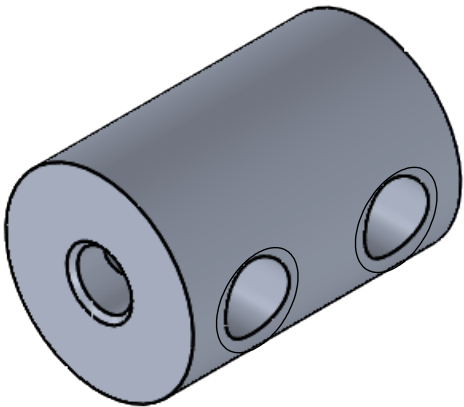
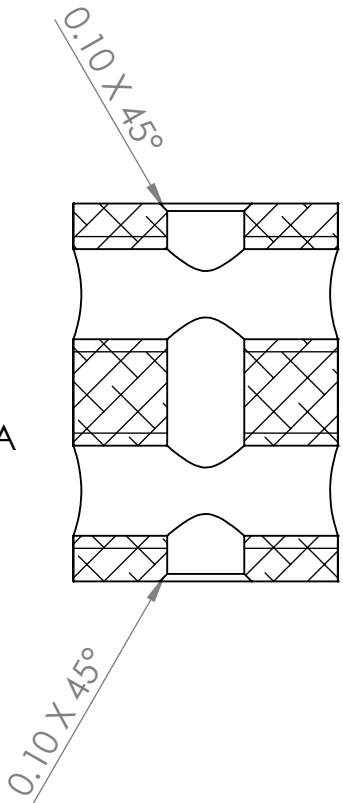


REVISIONS			
REV.	DESCRIPTION	DATE	BY
A	INITIAL RELEASE	2021-06-29	JHS



SECTION A-A



- NOTES:
- BAG AND TAG WITH NAME, NUMBER, AND REVISION.
  - CHEM FILM PER MIL-DTL-5541F TYPE II CLASS 1A

UNLESS OTHERWISE SPECIFIED:		Ernest Orlando Lawrence Berkeley National Laboratory	
DIMENSIONS IN MM		PROJECT PHYSICS LDRD	
TOLERANCES:		TITLE: Trillium2 Shaft Coupler 10	
ANGULAR ± 0.5°		SOLIDWORKS MODEL REVISION AT TIME OF RELEASE: 0007	
X ± 0.5		SIZE <b>B</b>	DWG. NO. TRL-0027
X.X ± 0.1		REV <b>A</b>	
X.XX ± 0.05		SCALE: 10:1	
X.XXX ± 0.010		WT: Kg	SHEET 1 OF 1
GD&T PER: ASME Y14.5M-2009			
MATERIAL <b>6061-T6</b>			
MACHINING FINISH: 3.2 micron			
EDGE BREAK: 0.1mm x 0.1mm			
PROJECTION: THIRD ANGLE			
DO NOT SCALE DRAWING			